

Reminder: NZEI Teacher Strike Wednesday 29 May (see notice pg. 4)
Queen's Birthday Public Holiday Monday 03 June
Teacher-Only Day Tuesday 04 June
- SCHOOL & ASC CLOSED

A note from the Principal...

Our students have been treated to some very special learning experiences over the last few weeks, including programming Beebot and Dash robots, a visiting theatre performance of "The Hare & the Tortoise" and touch rugby coaching. Excitement was in the air as students learned to collaborate to solve directional problems, were mesmerised by the antics of the acting troupe and developed their ball handling skills. We value these extracurricular opportunities, as they not only help to make learning fun, they expose our students to so many different experiences. Our Strategic Goal 1 "to Empower lifelong learners" is certainly being well-met at Rewa Rewa School.

Jan Otene
Principal

Happening in Our School...

Students Who Are Making A Difference

Students from across all year levels are working hard to make a difference at our school. Some of the ways they do this is:

Our Peer Mediators go out every lunchtime to help students find ways to play positively together and teach them how to resolve issues. The data that they gather is used to analyse trends that we can use to better help our students. The last 4 weeks in a row have seen zero incidents - hence the Onesie Fun Day last Friday. Great for school spirit!

Student Leaders are a very busy group. Term 1 leaders have used their bake sale funds to order PE gear for wet and fine weather. The gear will be presented to the school at an assembly coming up soon. Term 2 leaders are developing Lunchtime Clubs (Book, Art and Soccer), to encourage our students to work and play together.

Muhammed and Matilda volunteered to survey all classes about what playground markings students would like to have in our quad. The H&S Easter raffle brought in \$1500, so we are hoping that this will allow us to pay for quite a few colourful designs.

Our student voice is very important. Each year we gather information from our Year 3-4 students using an NZCER online survey to gain a clearer idea of what matters to them and how our school could better support them. It is very interesting to see the trends each year as our student population evolves.

Thank you to those who are supporting our sausage sizzle days. This money is being used to subsidise the Athletics programme that students use to support their maths learning – for use both at home and in the classroom. Thank you to Erin and Lynnda for making this happen.

We encourage you to pay the \$15 invoiced for Athletics, if you have not already done, as this is a fantastic opportunity for your child to build their maths skills in a fun way.

BOARD NEWS

Board Elections

Nominations for the Board of Trustees close this Friday 24 May at 12 noon, nominations must be received by the Office by that time to be included in this year's election.



We welcome Tane, Tia, Tiria & Troy, along with their family, to Rewa Rewa School.

If you have a child who is turning 5 this year, please enrol them as soon as possible, so that school visits can be arranged.

Term 2 Policies for Review

We value feedback from our parent community and all parents are able to submit comments for policy review very easily at www.schooldocs.co.nz. Please email office@rewarewa.school.nz for login details. Parents can access policies on this site at any time.

Policies for Term 2 Review:

- Curriculum & Student Achievement
- Emergency Planning & Procedures

Assessment

Teachers provide the Board with information on how are our students progressing and achieving. This enables the Board to ensure that resources and funding are best placed in areas to support our learners.

Complaints Process

After reviewing the complaints policy recently, this has been formatted in a more user-friendly flowchart format to assist in understanding the process to use. As always, if you have a concern, please let us know so that we can work with you to find a joint resolution. See Page 5 for a copy of the Complaints Flowchart.

New Student Reports

All yr 1- 6 student reports have had an update. We are eager to gain parent feedback about the format and content of these reports and will be asking all parents to take 3 minutes to complete a quick survey when you have your child's interview. We will listen to feedback and take these ideas on board.

Activity Fee & Voluntary Donation

Thank you to the many families who have paid their Activity Fee and Voluntary Donation. If you have not yet done so, please consider that setting up an Automatic Payment of \$5-10 per week to pay your Activity Fee will have this paid before the end of Term 3 in most cases. A reminder that this payment was committed to on your child's enrolment at Rewa Rewa and we rely on this income to provide all the wonderful extracurricular activities that your child enjoys, such as sports coaching, theatre performance, Life Education Trust and school trips to Zealandia.

After School Care Fees

A reminder to all parents that After School Care fees are payable weekly or fortnightly, 2 weeks in advance at all times. If you require an extra or casual session for your child, spaces are currently available, please telephone the Office and speak to a staff member no later than 10am on the day required. Payment for extra or casual sessions is required on or before the day of attendance.

Kapa Haka

If you would like your child to be in the kappa haka performance group, please let Charlotte Hills know by Friday 24 May.

Upcoming Events...

Friday	24 May	12 noon	Nominations Close for BOT Elections
Wednesday	29 May		NZEI Teacher Strike—SCHOOL CLOSED
Thursday	30 May	11am	School Cross Country
Monday	3 June		Queen's Birthday Public Holiday—SCHOOL CLOSED
Tuesday	4 June		Teacher-Only Day—SCHOOL CLOSED
Wednesday	5 June	11am	Postponement Date for School Cross Country
Friday	07 June	12 noon	Board of Trustees Election Voting Closes
Monday	10 June		Regional Health Vision & Hearing Testing at School
Wednesday	19 June	2.30-3pm	Focus Group Meeting.
Friday	28 June	3-5pm	School Disco

Assembly Certificates

Week 2, Term 2

Kowhai	Muhammed	Integrity: Making good choices for learning and being a good role model to others.
Kahurangi	Lucas	Integrity: consistently taking charge of his learning, staying focused and sharing his work ethic with others in the class.
Whero	Samuel	Joining in, thinking about others and great group work in Music.
Whero	Hirusha	Joining in with groups and participating in class.
Kowhai	Enrico	Participating & Contributing: becoming actively involved in classroom discussions and being a valuable group member in Computational Thinking.
Kahurangi	Tallulah	Throughout the week has modelled and shared her thinking skills with others.
Whero	Melissa	Independently creating and writing an algorithm for your fairy tale re-tell.
Kowhai	Ananyaa	Always trying her best and consistently showing Bronze Learner skills.
Kahurangi	Michaiah	Consistently including others, being a good role model, and focusing on her learning.



22 May 2019

A Message from NZEI:

We greatly appreciate the community support that we have already received following the decision by teachers and principals to strike on Wednesday 29 May.

The decision to take further strike action was not taken lightly by any of us. For the first time, both primary and secondary teachers are striking together because the crisis in education hits us all very hard and we need the Government to understand how serious it is.

Schools are grappling with the fallout of a 40% nosedive in the number of people training to be teachers between 2010 and 2016, even while the population grew by 400,000. While the situation improved a little last year and the Government has announced an urgent \$95m package to recruit teachers, this is not sufficient to address the crisis. Schools struggle daily to find enough teachers to meet their relief teacher needs and this will worsen as winter approaches. There is also a desperate need for more support for children with additional learning needs.

The fact is that teaching is no longer considered an attractive profession due to long-term under-funding of the education sector. A significant pay jolt is part of the solution, alongside significant improvements to our heavy workloads. Otherwise our schools will end up with larger class sizes and more teachers leaving.

On Wednesday 29 May we hope you will join us at our local public event, likely to be from midday. We would love to see you and your children standing with us – together we are a community and we can make a difference. We will advise you of further details when they are confirmed.

Strike action programme outline:

11.15 onwards	Gather at Civic Square ready for briefing at 11:45
11.45	Opening/Welcome/Information regarding the march
12.00	March to Parliament
1.00 approx	Opening Parliament rally
1.30	Approximate finish time

March to Parliament:

- ✦ We will be marching in the street along Mercer Street, into Willis Street, along Lambton Quay to Parliament Grounds
- ✦ There will be a rolling street closure which is controlled by a Traffic Management Company and they reopen the street behind us after we march through
- ✦ There will be Marshalls in fluoro vests in key points along the route
- ✦ There will also be first aiders in pink vests along the way.

Gathering at Parliament:

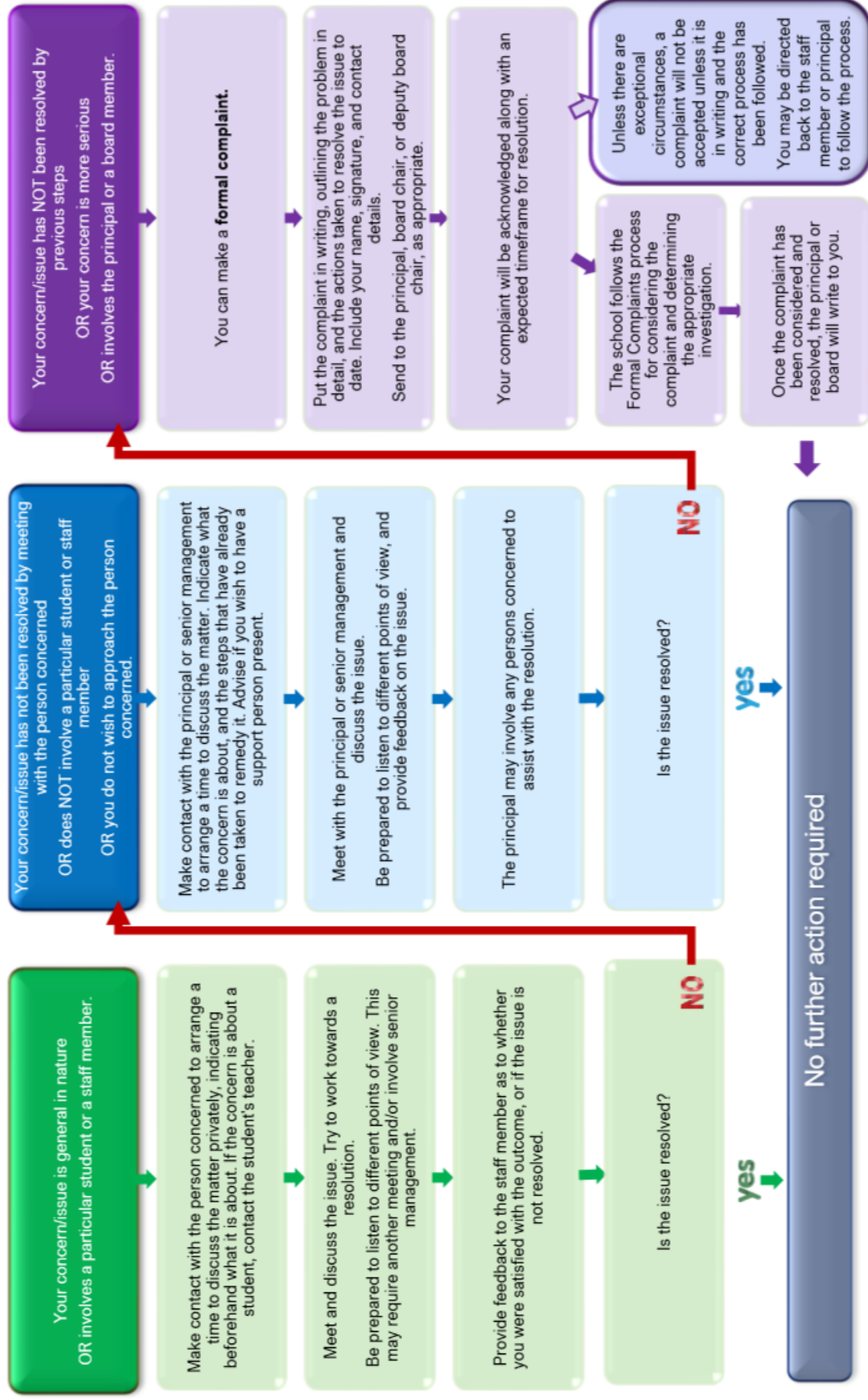
- ✦ There will be barriers around the steps leading up to Parliament building – please stay behind the barriers at all times. The only people allowed behind the barriers are the speakers and presenters
- ✦ We have been instructed to leave the grounds in the same state before arriving – thanks in advance for your help to do this.

Respect to Tikanga:

We will open with karakia and waiata at Civic Square and close with karakia and waiata at Parliament

Concerns and Complaints Process

Most concerns can be resolved informally by discussions with the people concerned.



This flowchart aligns with the school's Concerns and Complaints policy and procedures.